



QuakeWrap Inc.

6840 S. Tucson Blvd.  
Tucson, Arizona 85756

Phone: (520) 791-7000  
Toll Free: (866) QuakeWrap

www.QuakeWrap.com

PROJECT:

TYPICAL STEEL PILE  
REPAIR DETAILS

CLIENT:

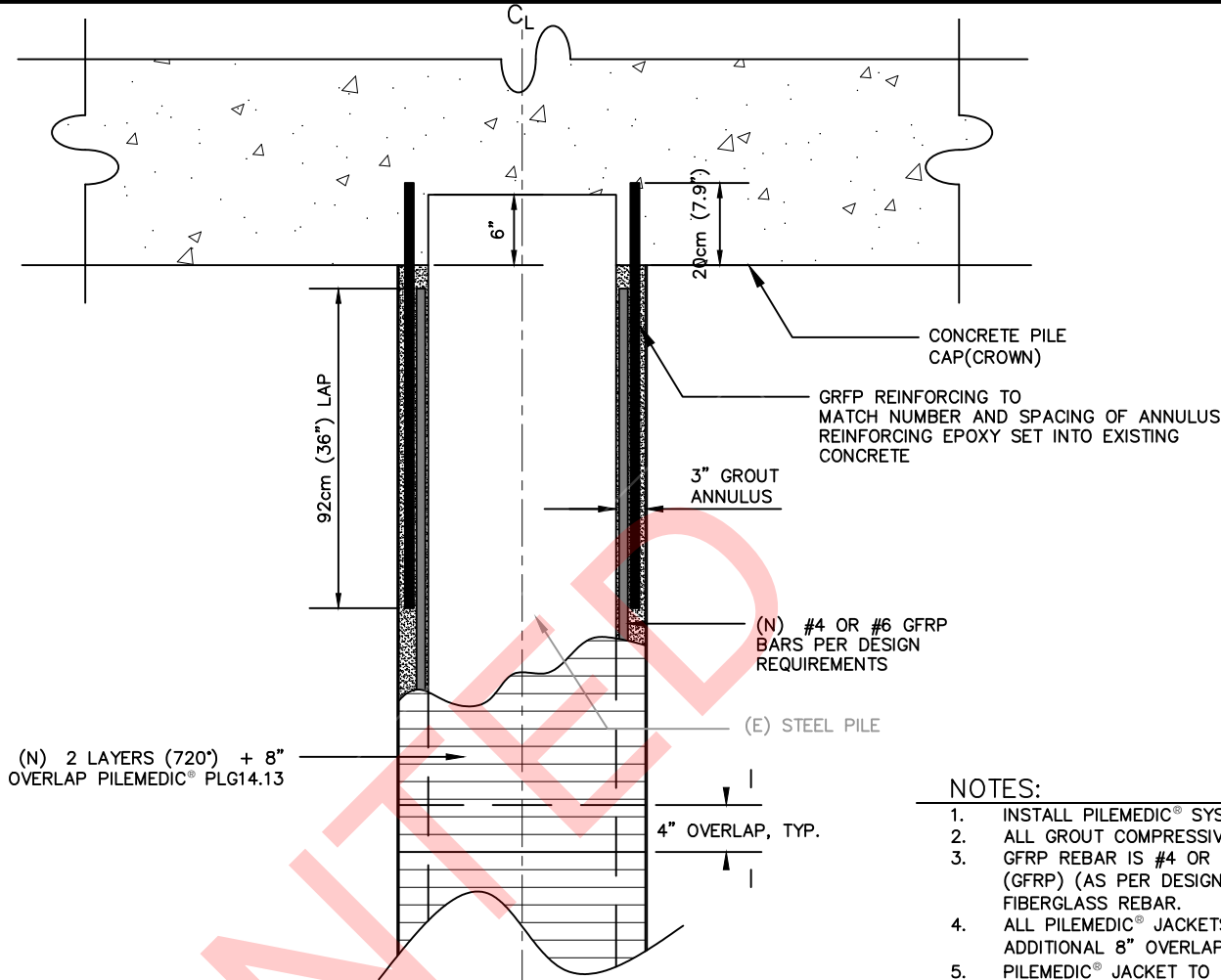
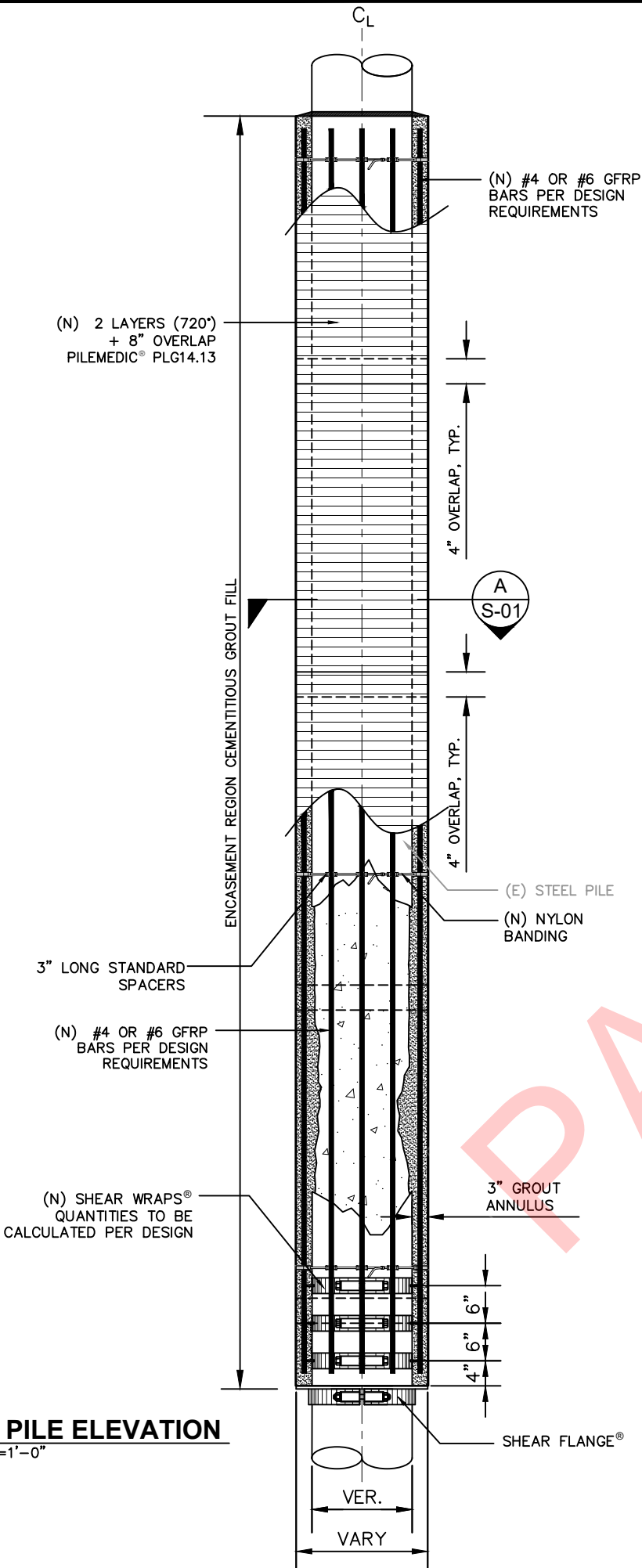
TITLE:

PLUMB PILE DETAILS

DESIGNED & APPROVED BY:

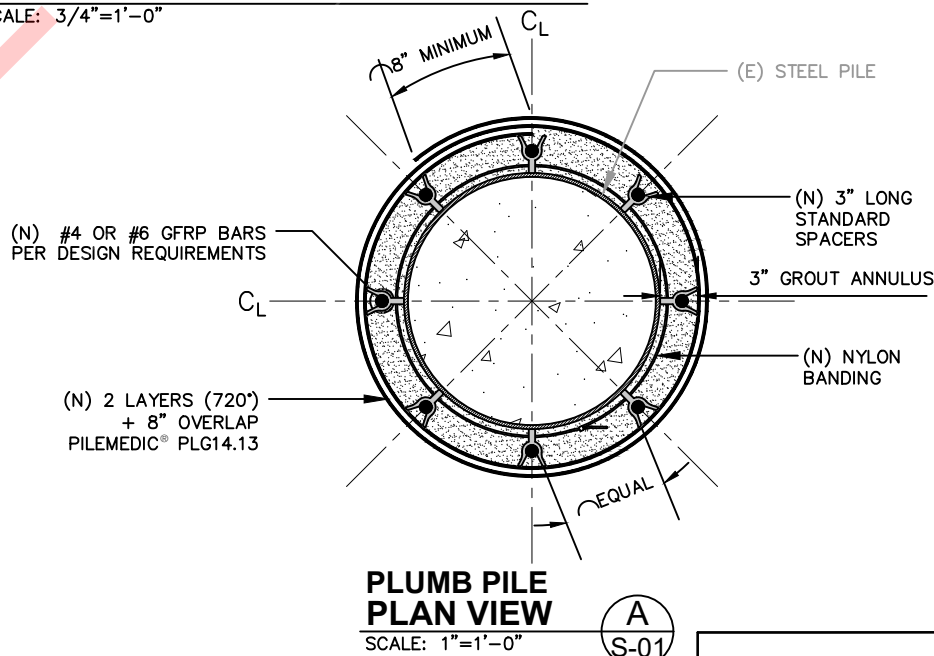
PLUMB PILE ELEVATION

SCALE: 1/2"=1'-0"



PILEMEDIC AT CONCRETE CAP (CROWN)  
TERMINATION DETAIL

SCALE: 3/4"=1'-0"



PLUMB PILE  
PLAN VIEW

SCALE: 1"=1'-0"

NOTES:

1. INSTALL PILEMEDIC® SYSTEM PER PILEMEDIC® SPECIFICATIONS.
2. ALL GROUT COMPRESSIVE STRENGTH SHALL BE 6,000 PSI, MIN.
3. GFRP REBAR IS #4 OR #6 GLASS FIBER REINFORCED POLYMER (GFRP) (AS PER DESIGN REQUIREMENTS) ASLAN 100 SERIES FIBERGLASS REBAR.
4. ALL PILEMEDIC® JACKETS TO BE 2 COMPLETE LAYERS PLUS AN ADDITIONAL 8" OVERLAP IN HOOP DIRECTION, U.N.O.
5. PILEMEDIC® JACKET TO BE INSTALLED USING QUAKEBOND™ 220UR UNIVERSAL RESIN.

ALL SERVICES, METHODS AND PRODUCTS OF PILEMEDIC, LLC AND QUAKEWRAP, INC. WHETHER OFFERED BY THIS COMPANY OR VIA ANY OTHER CHANNEL ARE PROTECTED BY MULTIPLE US AND INTERNATIONAL PATENTS AND PENDING PATENT APPLICATIONS.

REVISIONS				
NO.	DESCRIPTION	DRAWN	CHECKED	DATE
			S - 01	



QuakeWrap Inc.

6840 S. Tucson Blvd.  
Tucson, Arizona 85756

Phone: (520) 791-7000  
Toll Free: (866) QuakeWrap

www.QuakeWrap.com

PROJECT:

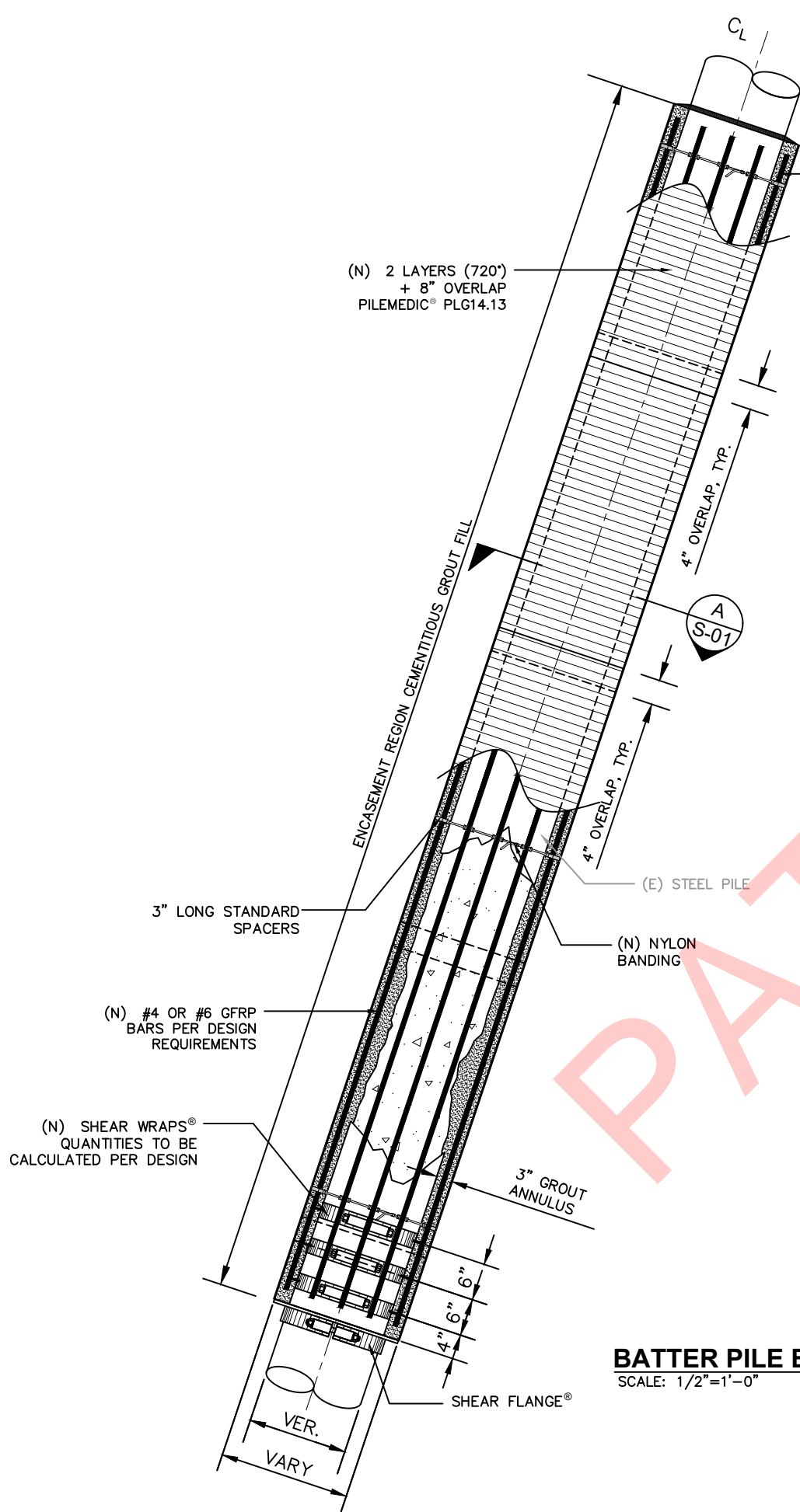
TYPICAL STEEL PILE  
REPAIR DETAILS

CLIENT:

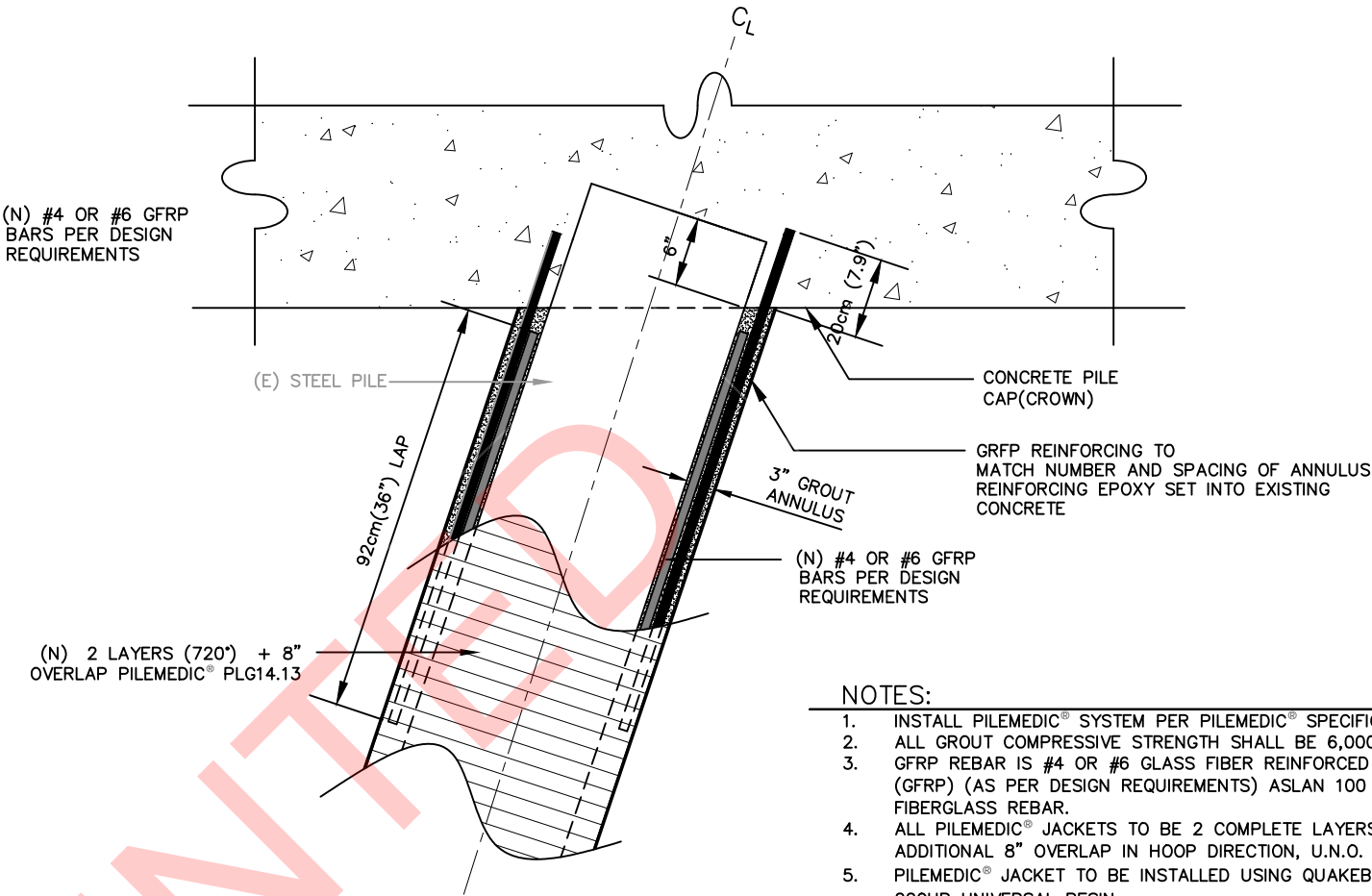
TITLE:

PLUMB PILE DETAILS

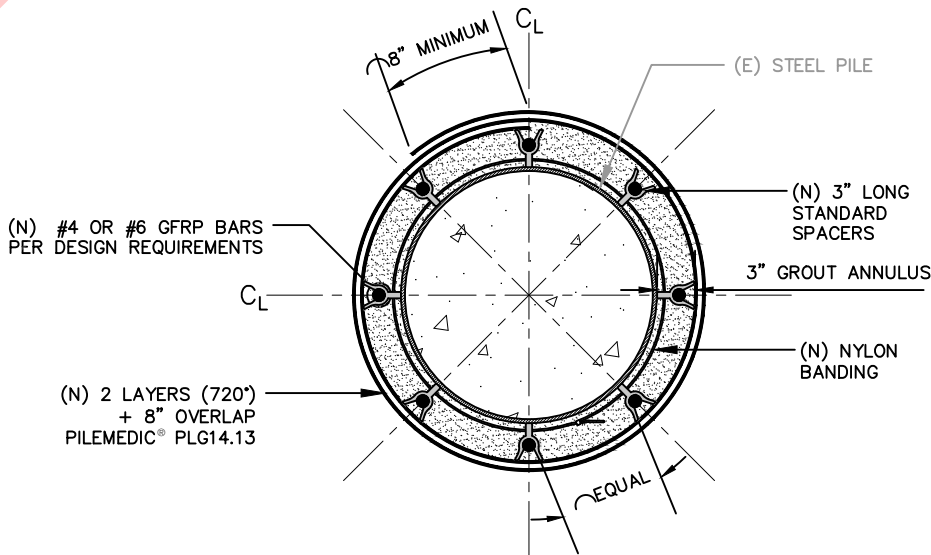
DESIGNED & APPROVED BY:



**BATTER PILE ELEVATION**  
SCALE: 1/2"=1'-0"



**PILEMEDIC AT CONCRETE CAP (CROWN)  
TERMINATION DETAIL**  
SCALE: 3/4"=1'-0"

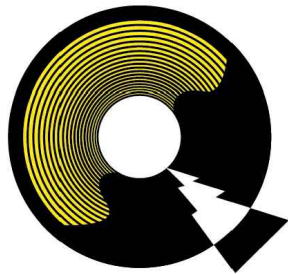


**BATTER PILE  
PLAN VIEW**  
SCALE: 1"=1'-0"

- NOTES:
1. INSTALL PILEMEDIC® SYSTEM PER PILEMEDIC® SPECIFICATIONS.
  2. ALL GROUT COMPRESSIVE STRENGTH SHALL BE 6,000 PSI, MIN.
  3. GFRP REBAR IS #4 OR #6 GLASS FIBER REINFORCED POLYMER (GFRP) (AS PER DESIGN REQUIREMENTS) ASLAN 100 SERIES FIBERGLASS REBAR.
  4. ALL PILEMEDIC® JACKETS TO BE 2 COMPLETE LAYERS PLUS AN ADDITIONAL 8" OVERLAP IN HOOP DIRECTION, U.N.O.
  5. PILEMEDIC® JACKET TO BE INSTALLED USING QUAKEBOND™ 220UR UNIVERSAL RESIN.

ALL SERVICES, METHODS AND PRODUCTS OF PILEMEDIC, LLC AND QUAKEWRAP, INC. WHETHER OFFERED BY THIS COMPANY OR VIA ANY OTHER CHANNEL ARE PROTECTED BY MULTIPLE US AND INTERNATIONAL PATENTS AND PENDING PATENT APPLICATIONS.

REVISIONS				
NO.	DESCRIPTION	DRAWN	CHECKED	DATE
			S - 02	



**QuakeWrap®**

**QuakeWrap Inc.**

6840 S. Tucson Blvd.  
Tucson, Arizona 85756

Phone: (520) 791-7000  
Toll Free: (866) QuakeWrap

[www.QuakeWrap.com](http://www.QuakeWrap.com)

**PROJECT:**

TYPICAL STEEL PILE  
REPAIR DETAILS

**CLIENT:**

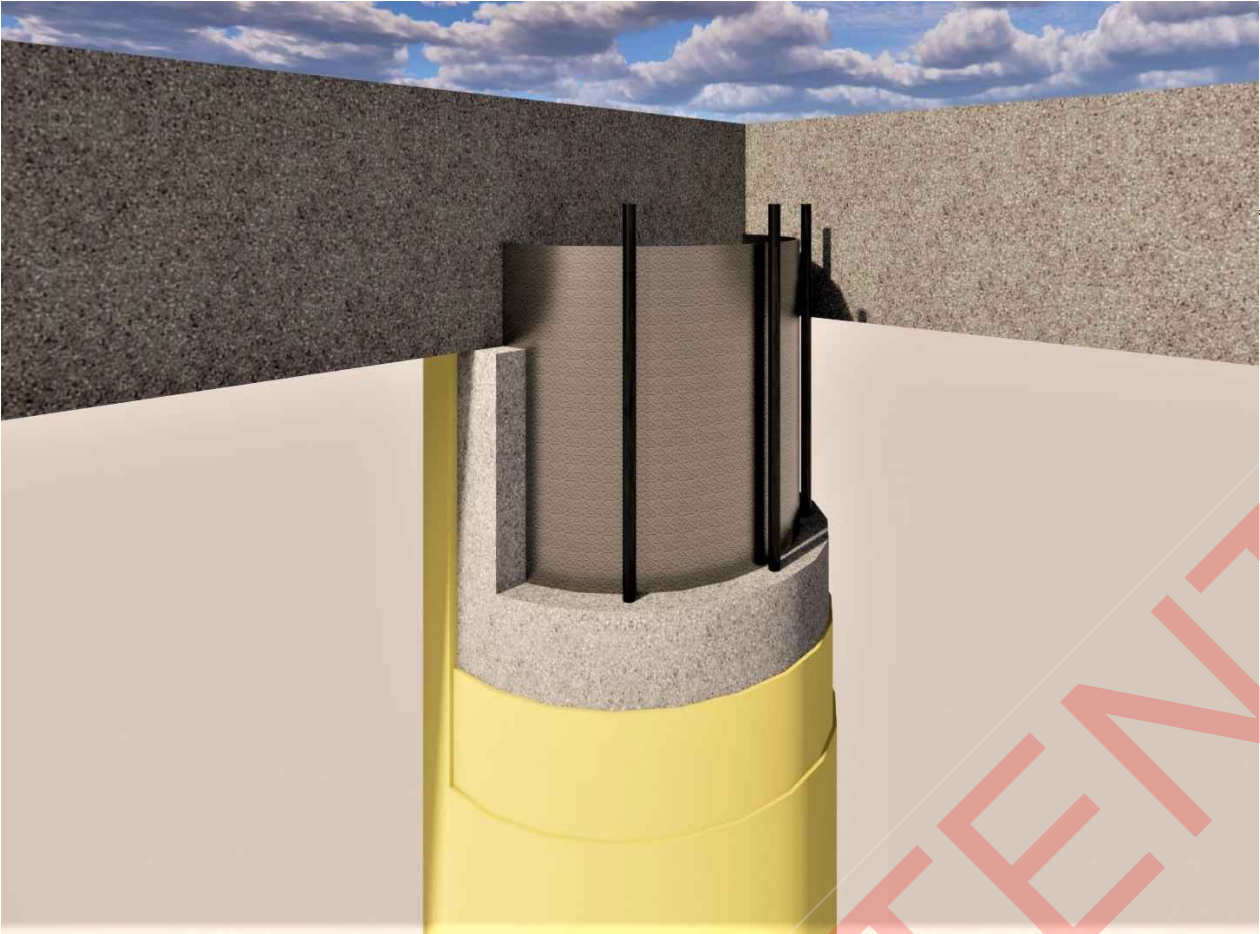
**TITLE:**

PLUMB PILE DETAILS

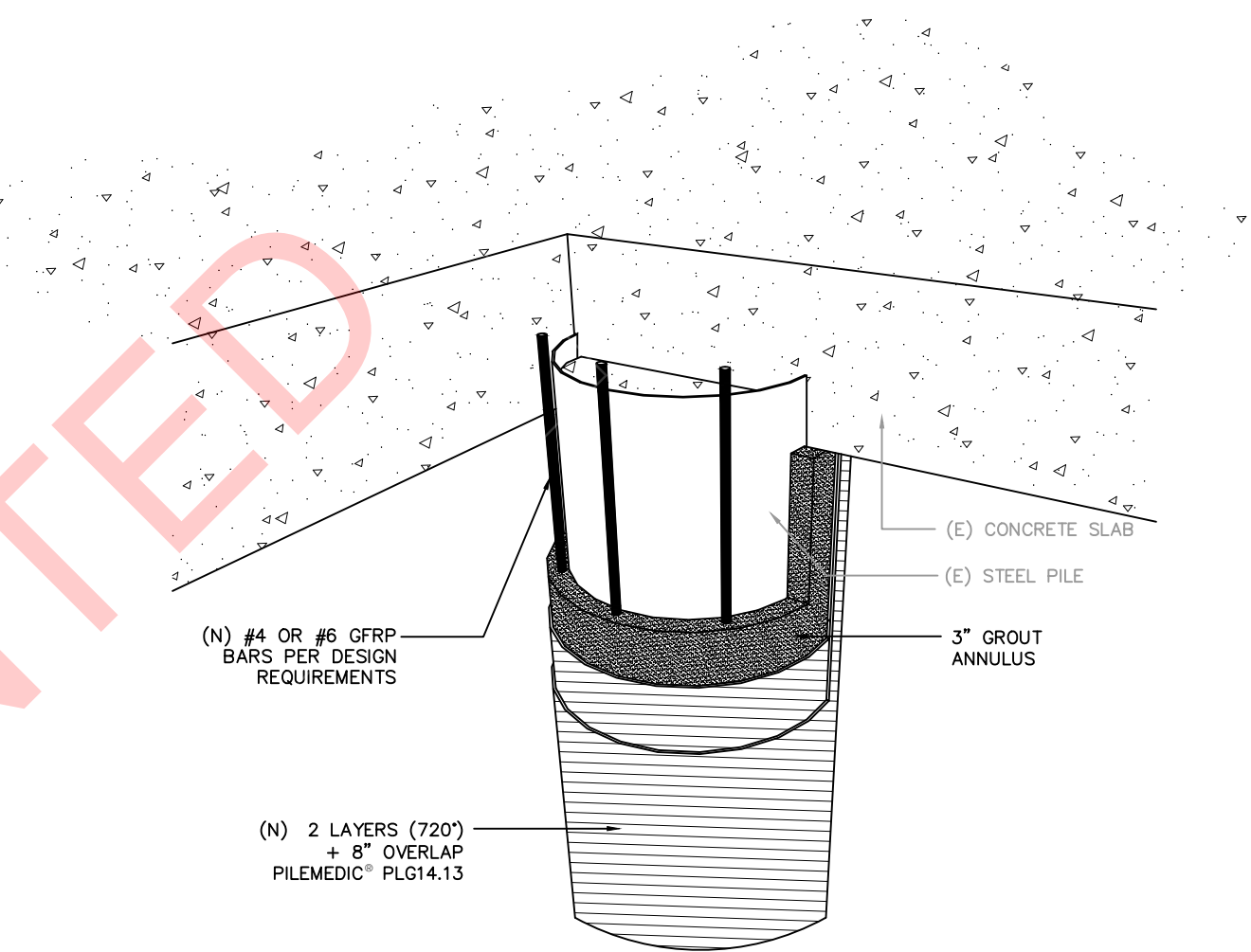
DESIGNED & APPROVED BY:

GFRP BARS INSERTION PROCEDURE:

1. DRILL HOLE OVERHEAD, HOLE SIZE WILL BE 7/8"
2. CLEAN WITH AIR PRESSURE.
3. FILL UPPER HALF WITH 220UR.
4. INSERT GFRP BAR AND PUSH ALL THE WAY TO THE TOP.
5. CLEAN EXCESS EPOXY THAT OZZES OUT.



P E R S P E C T I V E   V I E W



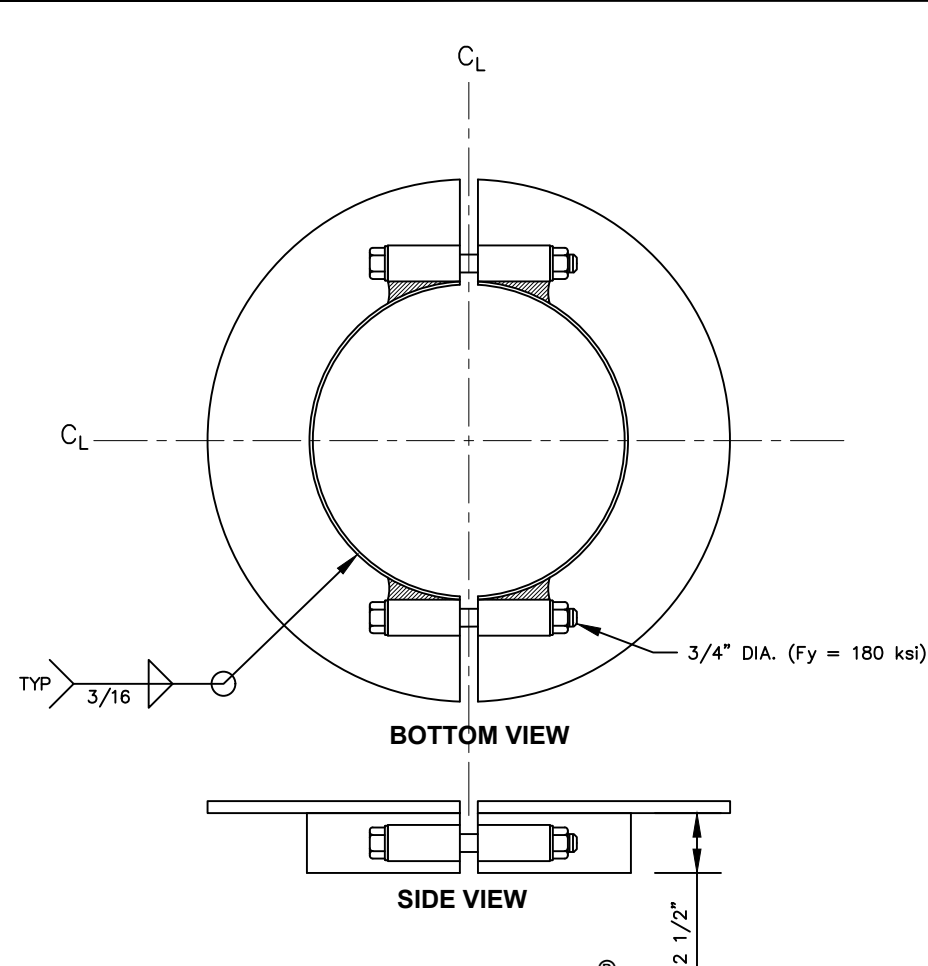
**TERMINATION  
ISOMETRIC VIEW (TYP.)**

SCALE: NTS.

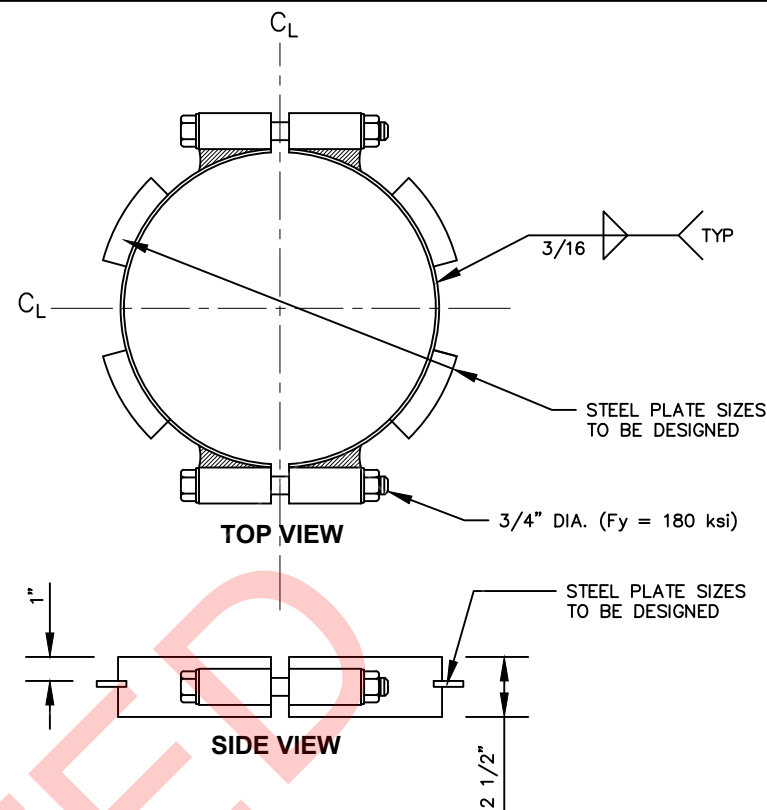
ALL SERVICES, METHODS AND PRODUCTS OF PILEMEDIC, LLC AND QUAKEWRAP, INC. WHETHER OFFERED BY THIS COMPANY OR VIA ANY OTHER CHANNEL ARE PROTECTED BY MULTIPLE US AND INTERNATIONAL PATENTS AND PENDING PATENT APPLICATIONS.

REVISIONS				
NO.	DESCRIPTION	DRAWN	CHECKED	DATE
			S - 03	

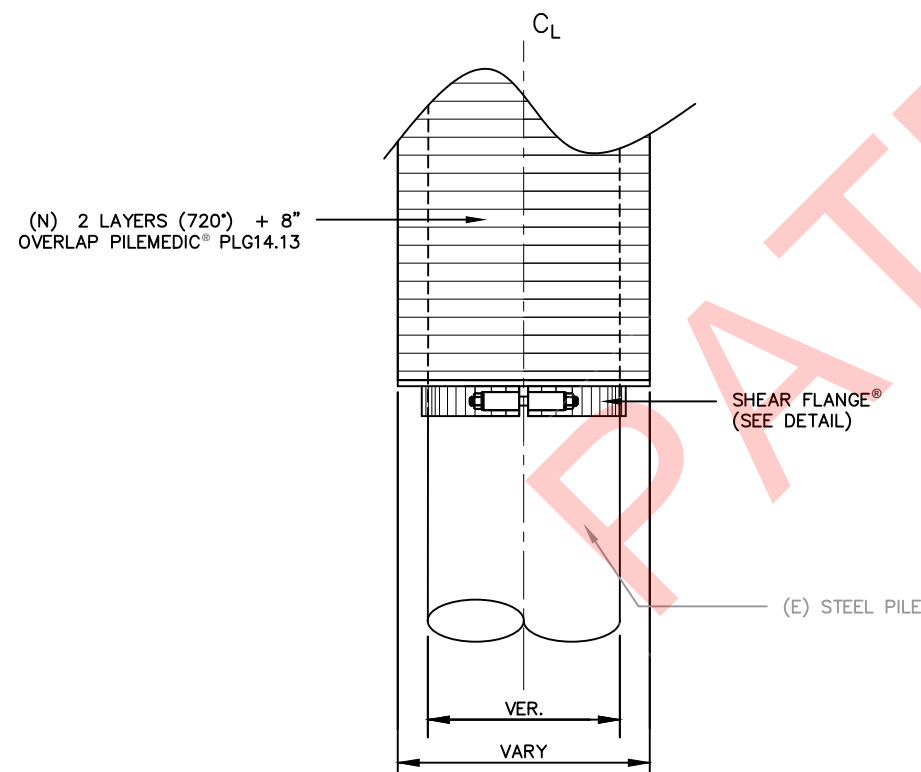




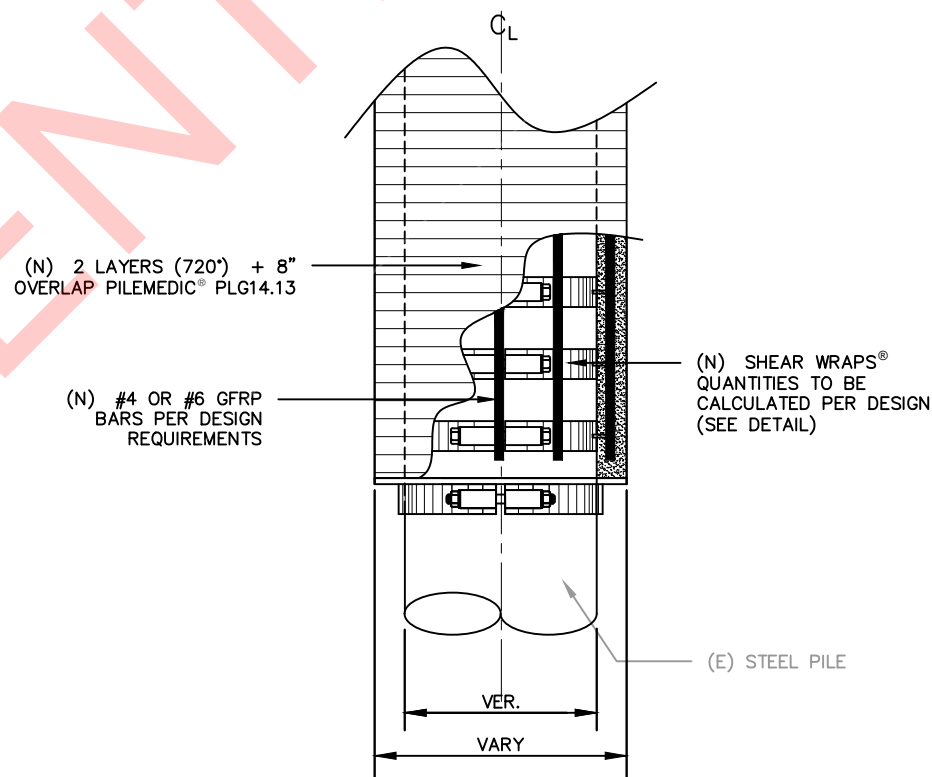
**SHEAR FLANGE®**  
SCALE: 1"=1'-0"



**SHEAR WRAP®**  
SCALE: 1"=1'-0"



**@ MIDPOINT TERMINATION  
SHEAR FLANGE®**  
SCALE: 3/4"=1'-0"



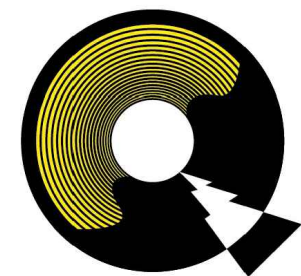
**@ MIDPOINT TERMINATION  
SHEAR WRAP®**  
SCALE: 3/4"=1'-0"

### SHEAR FLANGE

1. SHEAR FLANGE IS AN OPTIONAL DEVICE THAT CAN BE USED WHEN THE REPAIR REGION OF THE PILE ENDS AT A POINT ABOVE THE SEA FLOOR
2. SECURE SHEAR FLANGE TO THE PILE
3. POSITION THE PileMedic® JACKET TO REST ON TOP OF THE SHEAR FLANGE
4. PLACE THE CONCRETE/GROUT FOR A HEIGHT OF 8 TO 12 INCHES AT THE BOTTOM OF THE ANNULAR SPACE AND WAIT FOR THE GROUT TO HARDEN
5. FILL THE REMAINING HEIGHT OF THE ANNULAR SPACE WITH CONCRETE/GROUT
6. THE SHEAR FLANGE CAN BE REMOVED AFTER 24 HOURS AND USED ON OTHER PILES.

### SHEAR CLAMPS

1. CONTRACTOR SHALL INSTALL THE SHEAR WRAPS ON CLEANED AND PREPARED STEEL PILES TO THE LOCATION INDICATED WITHIN THE DETAILS.
2. EACH CLAMP BOLT SHALL BE TENSIONED TO 422 FOOT-POUNDS TORQUE.
3. SHEAR WRAPS DO NOT OCCUR AT EL.=0.0
4. SHEAR FLANGE OCCURS AT THE BOTTOM OF REPAIR ZONE UNLESS SITE DETERMINED THAT SOIL EMBEDMENT CAN SUPPORT REPAIR.



**QuakeWrap®**

**QuakeWrap Inc.**

6840 S. Tucson Blvd.  
Tucson, Arizona 85756

Phone: (520) 791-7000  
Toll Free: (866) QuakeWrap

www.QuakeWrap.com

### PROJECT:

TYPICAL STEEL PILE  
REPAIR DETAILS

### CLIENT:

### TITLE:

PLUMB PILE DETAILS

DESIGNED & APPROVED BY:

REVISIONS				
NO.	DESCRIPTION	DRAWN	CHECKED	DATE
			S - 04	

ALL SERVICES, METHODS AND PRODUCTS OF PILEMEDIC, LLC AND QUAKEWRAP, INC. WHETHER OFFERED BY THIS COMPANY OR VIA ANY OTHER CHANNEL ARE PROTECTED BY MULTIPLE US AND INTERNATIONAL PATENTS AND PENDING PATENT APPLICATIONS.



**QuakeWrap®**

**QuakeWrap Inc.**

6840 S. Tucson Blvd.  
Tucson, Arizona 85756

Phone: (520) 791-7000  
Toll Free: (866) QuakeWrap

[www.QuakeWrap.com](http://www.QuakeWrap.com)

**PROJECT:**

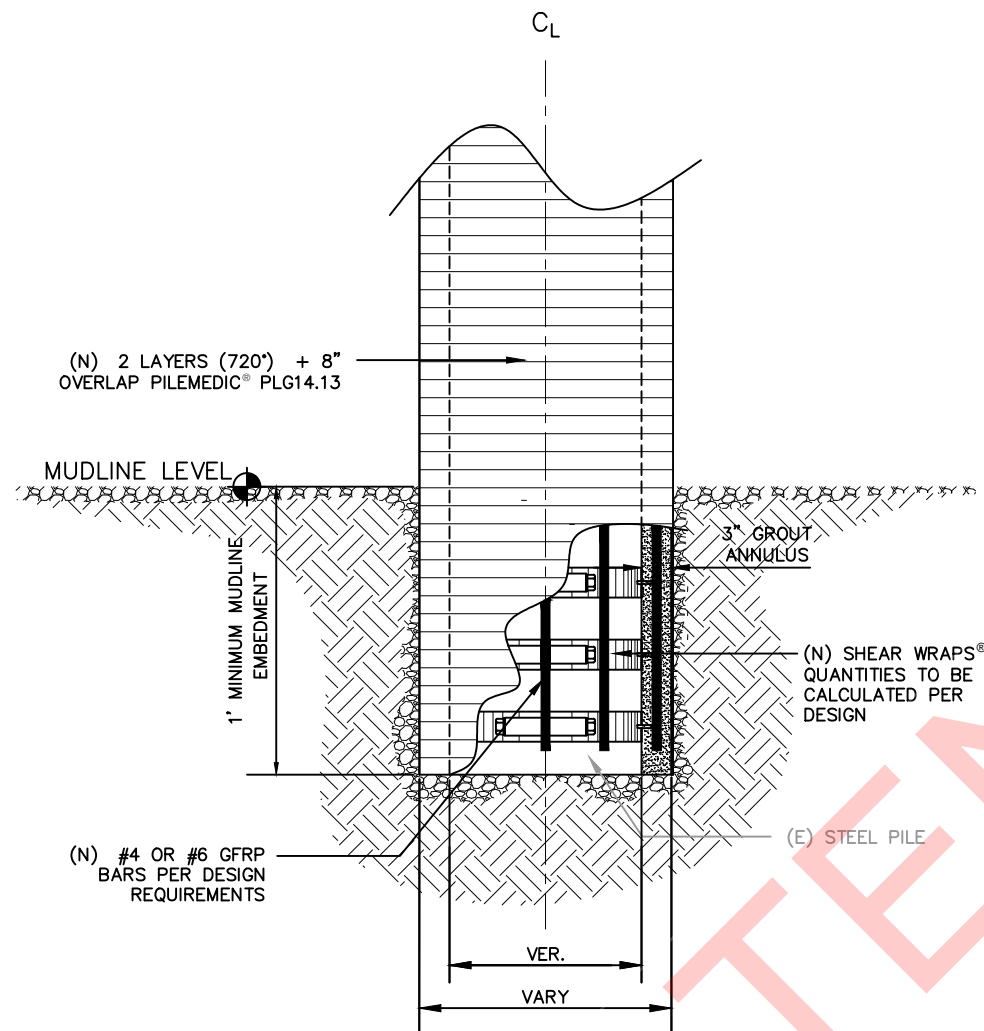
TYPICAL STEEL PILE  
REPAIR DETAILS

**CLIENT:**

**TITLE:**

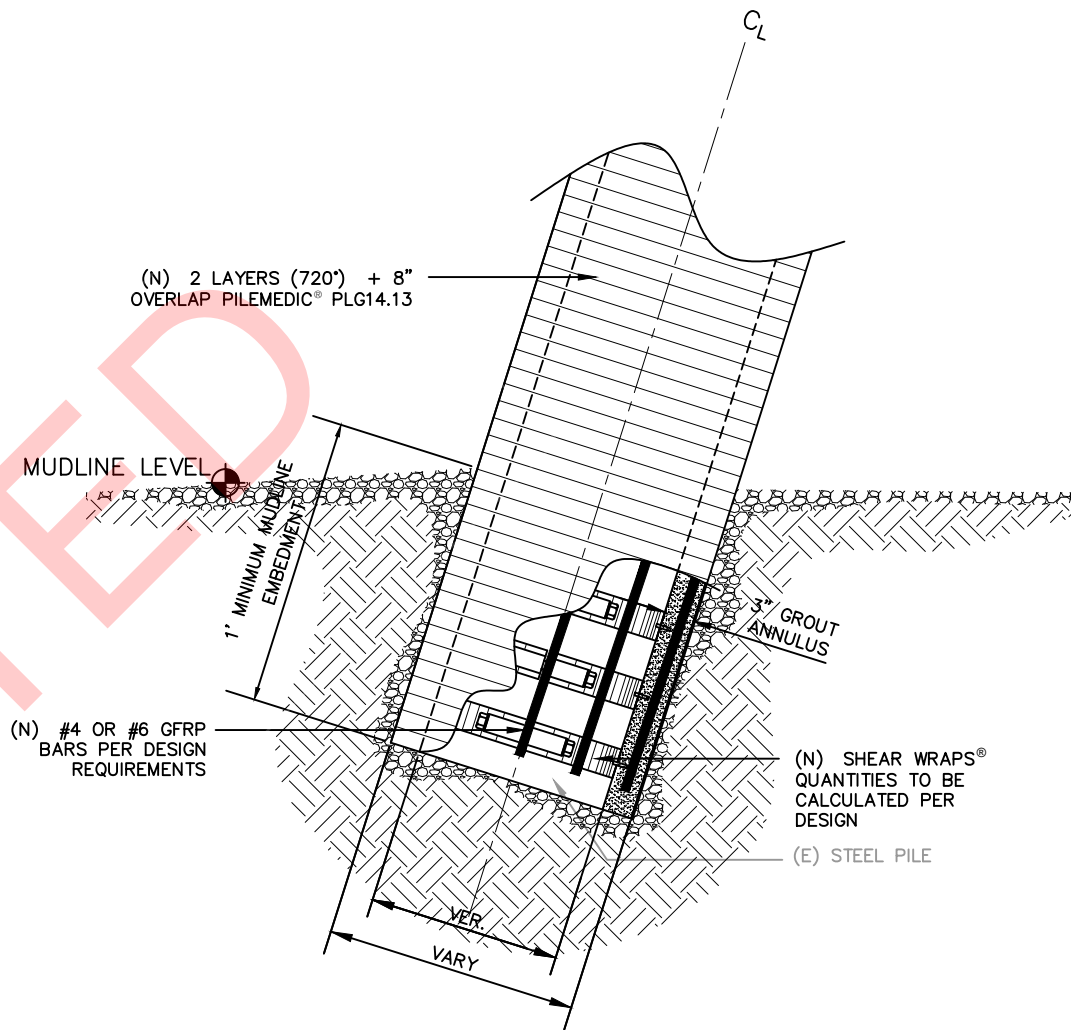
PLUMB PILE DETAILS

DESIGNED & APPROVED BY:



**PLUMB PILE  
MUDLINE TERMINATION DETAIL**

SCALE: 3/4"=1'-0"



**BATTER PILE  
MUDLINE TERMINATION DETAIL**

SCALE: 3/4"=1'-0"

ALL SERVICES, METHODS AND PRODUCTS OF PILEMEDIC, LLC AND QUAKEWRAP, INC. WHETHER OFFERED BY THIS COMPANY OR VIA ANY OTHER CHANNEL ARE PROTECTED BY MULTIPLE US AND INTERNATIONAL PATENTS AND PENDING PATENT APPLICATIONS.

REVISIONS				
NO.	DESCRIPTION	DRAWN	CHECKED	DATE
			S - 05	